

2023 Health Research

POSTER FAIR

Virtual Exposition

WEDNESDAY, MAY 17 FROM 2-5P

INCLUDING FEATURED KEYNOTE SPEAKER (TBA)

“COMMUNITY-CENTERED INTEGRATED CARE”

El Rio Health & the Southern Arizona AHEC are seeking abstracts for **works in progress**, **finished projects**, and **conceptual works** that address and align with the theme, *community-centered integrated care*.

Students, residents, clinicians and researchers from across all disciplines and organizations are invited to submit. This is a peer-reviewed, juried fair and educational event that focuses on innovative approaches that make a positive impact on the health of our community.

TOPICS OF INTEREST

- Community-Engaged Research & Community-Based Participatory Research
- Quality & Performance Improvement
- Access to Care
- Education & Professional Development
- Coordination, Facilitation, & Integrated Care
- Administration, Leadership & Management
- Rural Care
- Cross Cultural Medicine
- Integrated Behavioral Health



SUBMISSION LINK

CALL FOR POSTERS!

ABSTRACTS DUE BY
FEB 28, 2023



Accepted abstract authors will be asked to e-submit a finished poster for award consideration by April 20.

IMPORTANT DATES

- February 28th
Abstract Submission
- March 17th
Acceptance Notification
- April 20th
Accepted posters due for review
- May 17th
Virtual Poster Session | 2-5p

2023 Health Research POSTER FAIR *Virtual Exposition*

ABSTRACT SUBMISSION INSTRUCTIONS

Be sure your work emphasizes how your project, research and/or practice **positively impacts the health of your community**.

Use the submission link to access the Abstract Submission Form (500 word maximum). Your abstract must include the following elements:

- **Title, Authors and area of focus (from above areas)**
- **Review process*** (IRB, organization review, mentor review, etc.)
- **Brief description of project/research** (250 words max)
- **Project goals and/or objectives** (list 2-3 with 50 words max)
- **Project design/methods** (100 words max)
- **Discuss anticipated or actual findings** – specifically address how your project will impact primary care and/or your community. (100 words max)

For additional information on preparing an abstract, please review the [American College of Physicians \(ACP\) web page on Writing a Research Abstract](#) for reference.

***Note: All entries must describe a review process, including:**

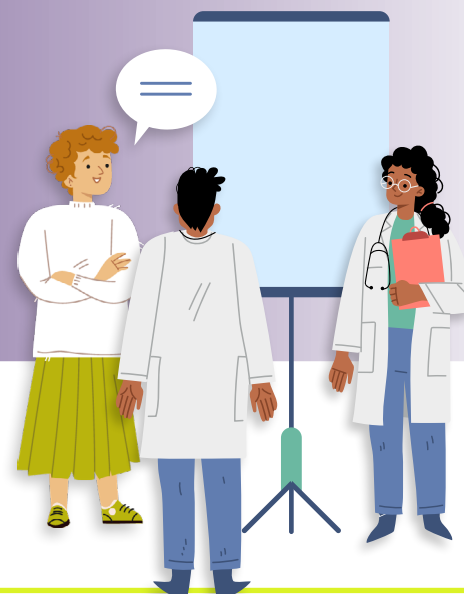
- Submission and approval by your respective Institutional Review Board (IRB); AND
- Approval for your project, idea, etc., by your organization or educational/ program/ project director or mentor.

SUBMISSION LINK



QUESTIONS?

For questions about the 2023 El Rio Health & Southern Arizona AHEC Research Poster Virtual Exhibition, please email **Erin Dougherty, PhD, MPH** at ErinD@elrio.org.



POSTER AWARDS SELECTION CRITERIA

INNOVATION

Poster provides new information or unique practice models. Contributes insight into important and timely research or improving patient care.

RELEVANCE

Topic is both pertinent and of great interest to community health centers and integrated care.

COMMUNITY IMPACT

Poster discusses the impact on health outcomes in the community. Clearly describes and demonstrates community involvement.

BEST OVERALL

"CREATE TOMORROW" CARLOS M. FLORES, MD AWARD

Poster clearly demonstrates an impact on improved health outcomes. Research and findings contribute to new knowledge of improved practices or policies that support community health centers. The model demonstrates replicability in other community health centers.

EL RIO
HEALTH

SOUTHERN ARIZONA AHEC
AT EL RIO HEALTH